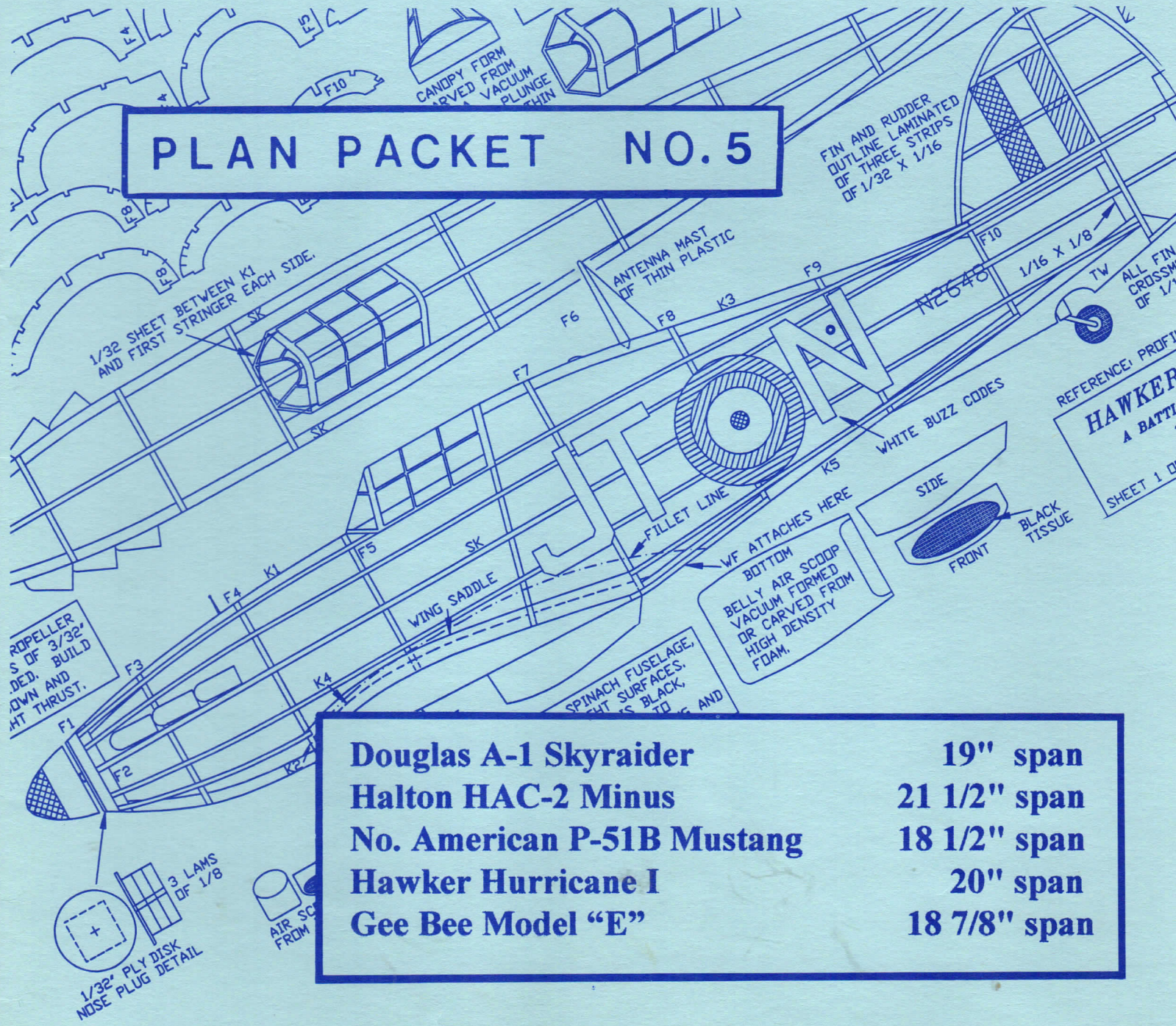


FLYING ACES

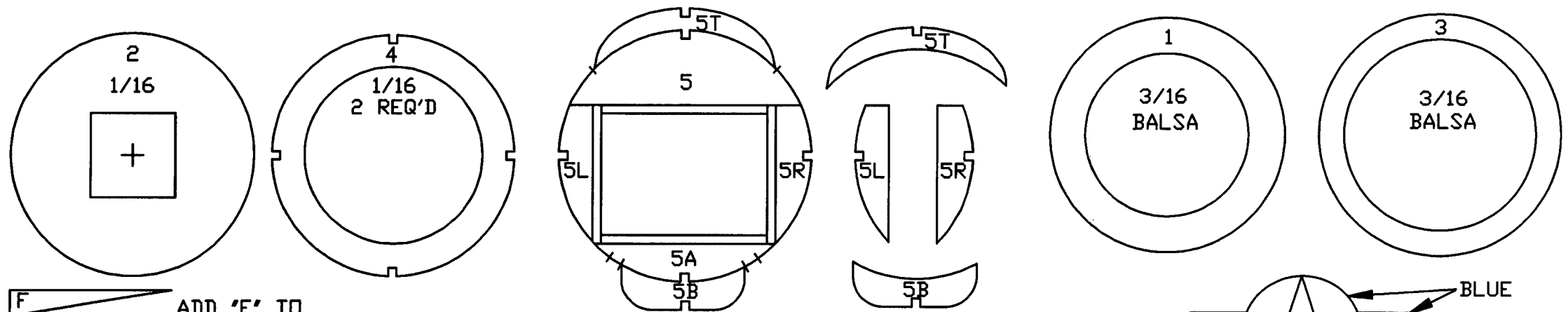
PLAN PACKET NO. 5



Douglas A-1 Skyraider	19" span
Halton HAC-2 Minus	21 1/2" span
No. American P-51B Mustang	18 1/2" span
Hawker Hurricane I	20" span
Gee Bee Model "E"	18 7/8" span

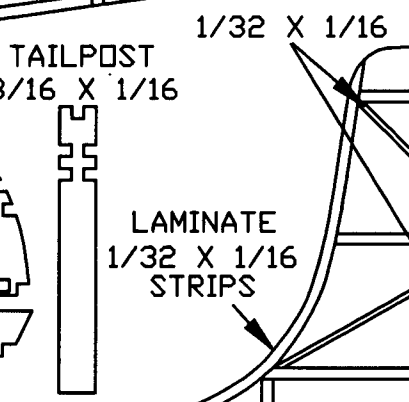
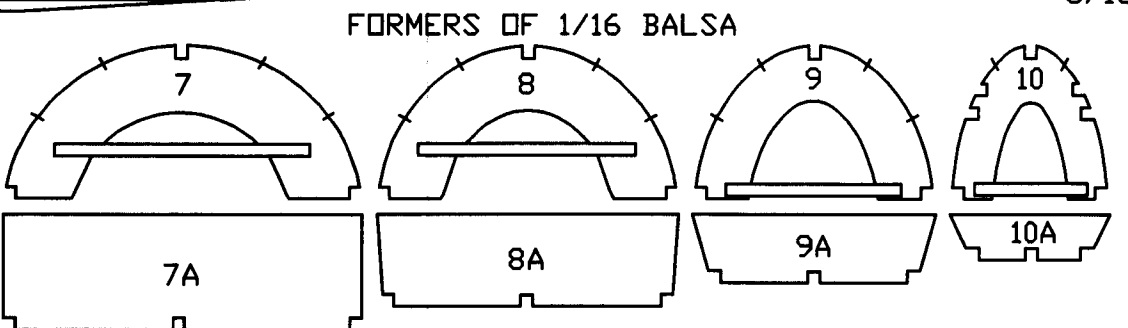
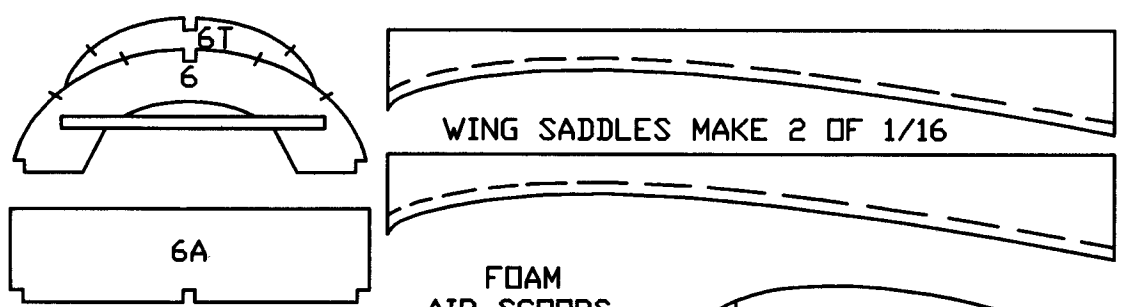
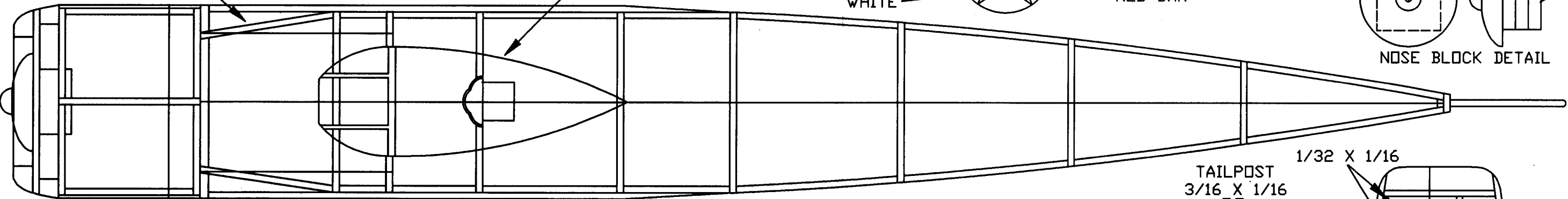
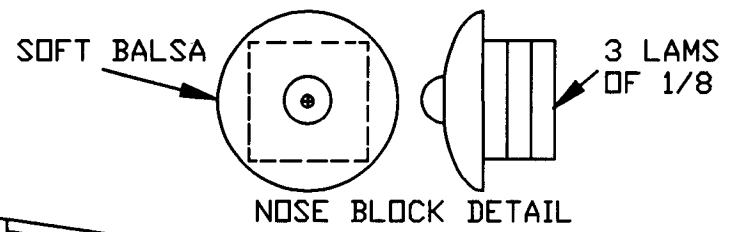
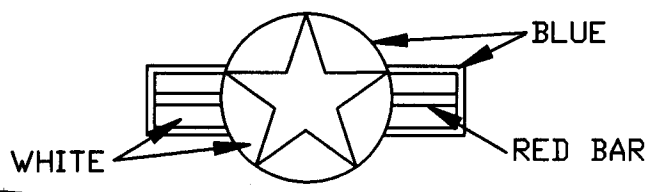
PROTO FLEW WITH 8" PECK PROPELLER AND TWO LOOPS OF FAI TAN II RUBBER 30" IN LENGTH. ONE LOOP WAS 1/8, THE OTHER WAS OF 3/32. DOWNTHRUST = 4 DEGREES, RIGHT THRUST = 4 DEGREES.

FUSELAGE BUILT USING BOX AND FORMER METHOD. CENTRAL UPPER STRINGER IS 1/16 SQUARE, ALL OTHER UPPER STRINGERS ARE 1/20 SQUARE.

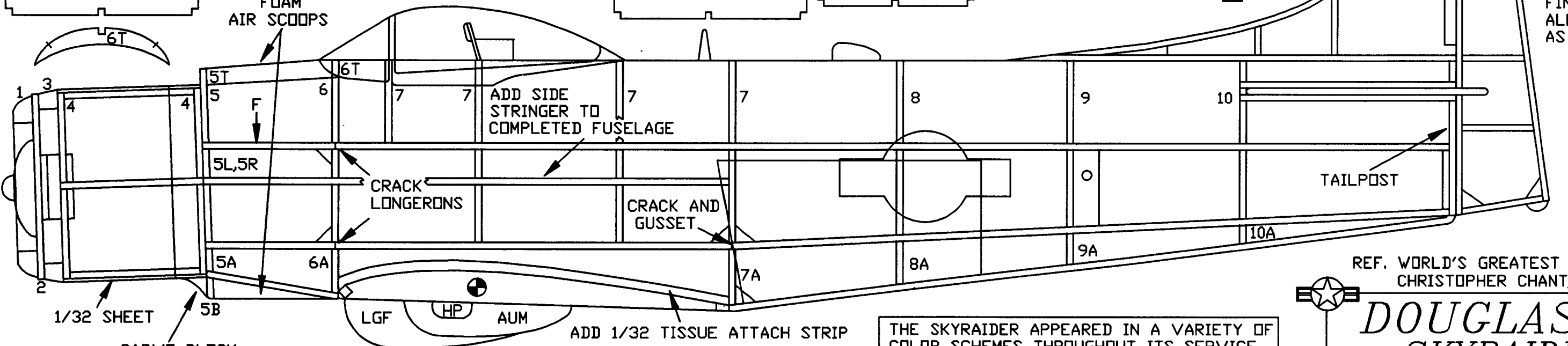


ADD 'F' TO LONGERON AFTER FUSELAGE ASSEMBLED
2 OF 1/16

AREA UNDER CANOPY COVERED WITH BLACK TISSUE



FIN AND RUDDER ALL 1/16 EXCEPT AS INDICATED



FAC PLAN PACK #15

THE SKYRAIDER APPEARED IN A VARIETY OF COLOR SCHEMES THROUGHOUT ITS SERVICE LIFE. THE SQUADRON/SIGNAL PUBLICATION ON THE SKYRAIDER IS A GOOD SOURCE FOR COLOR/MARKINGS INFORMATION.

REF. WORLD'S GREATEST AIRCRAFT CHRISTOPHER CHANT, CRESCENT

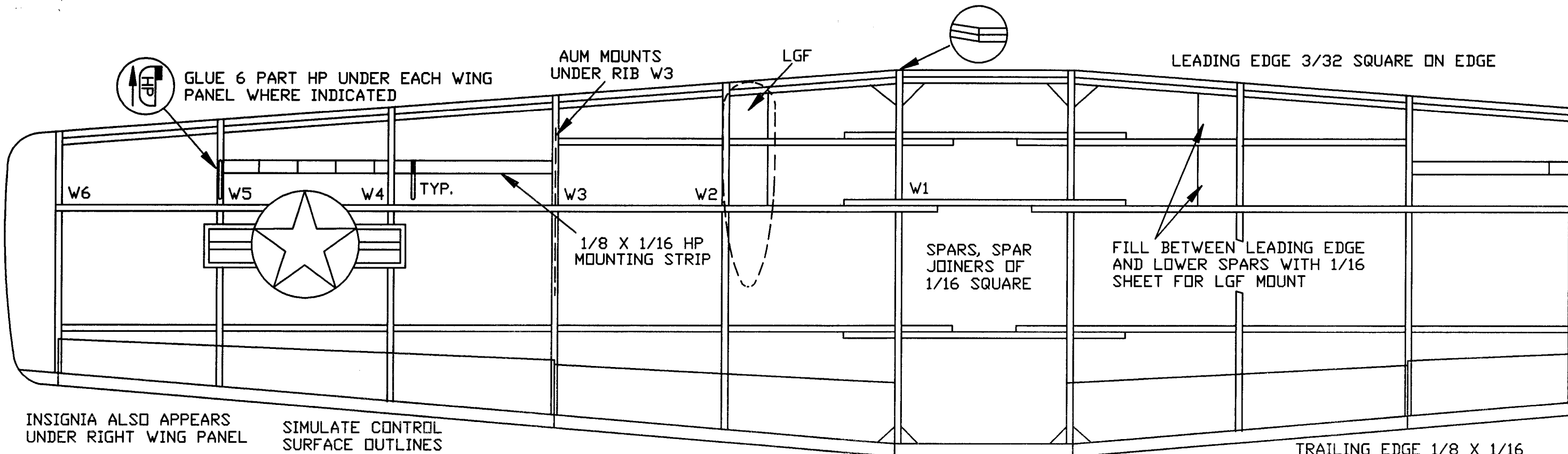
DOUGLAS A1 SKYRAIDER

19 INCH WINGSPAN

SHEET 1 OF 2 Tom Nallan 1996

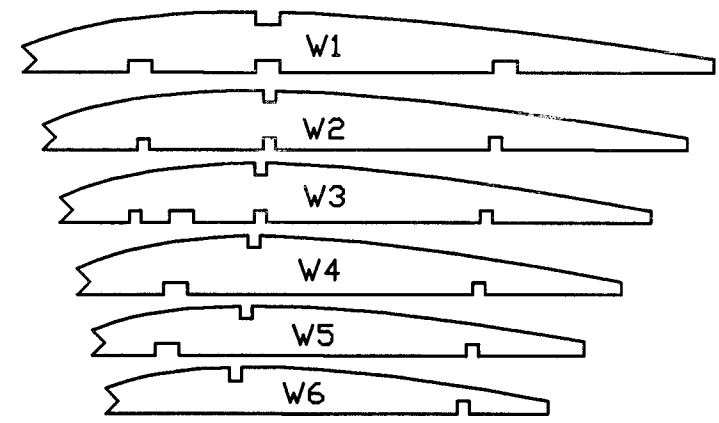
MODEL IS ALL BALSAS EXCEPT AS NOTED.

DIMENSIONS ARE IN INCHES.

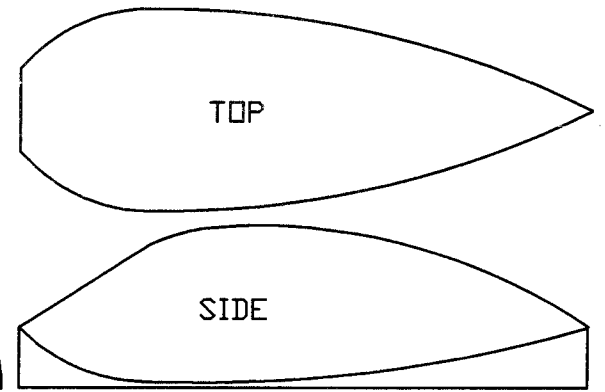
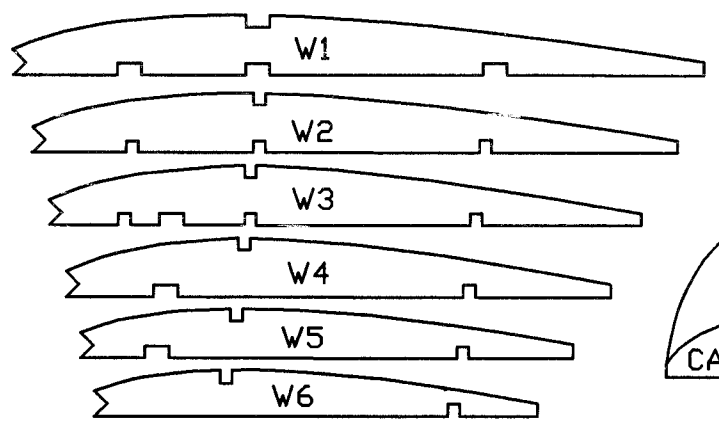


INSIGNIA ALSO APPEARS UNDER RIGHT WING PANEL

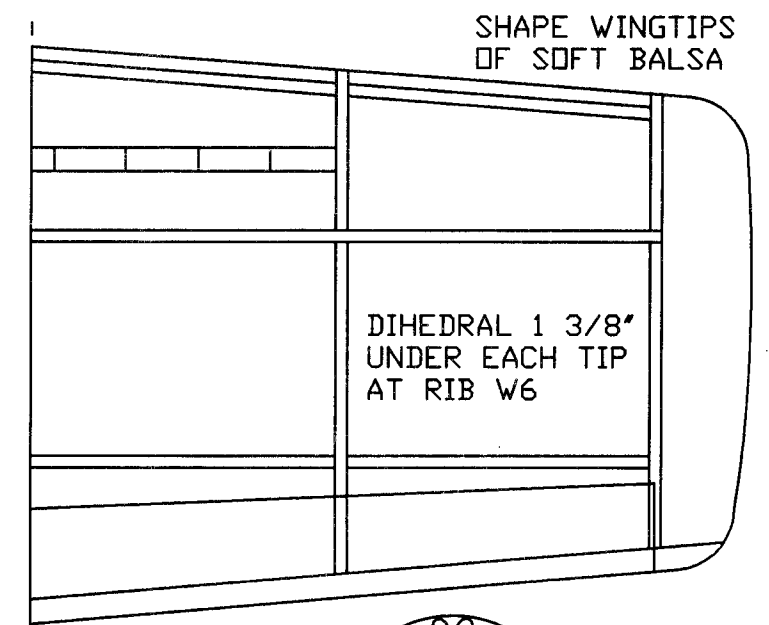
SIMULATE CONTROL SURFACE OUTLINES WITH BLACK TISSUE STRIPS.



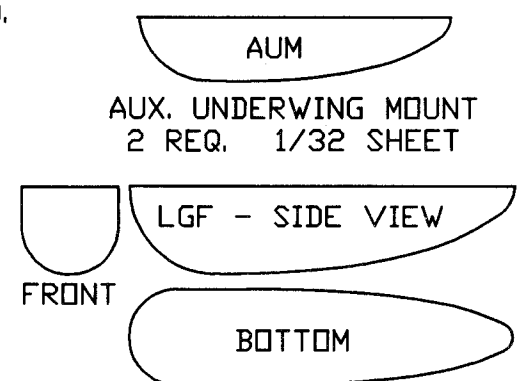
WING RIBS OF 1/16 SHEET



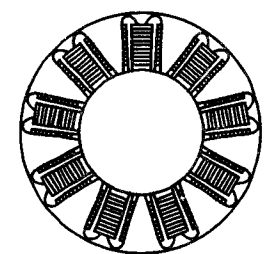
CANOPY MOLDED OF THIN ACETATE OR VINYL PLASTIC.



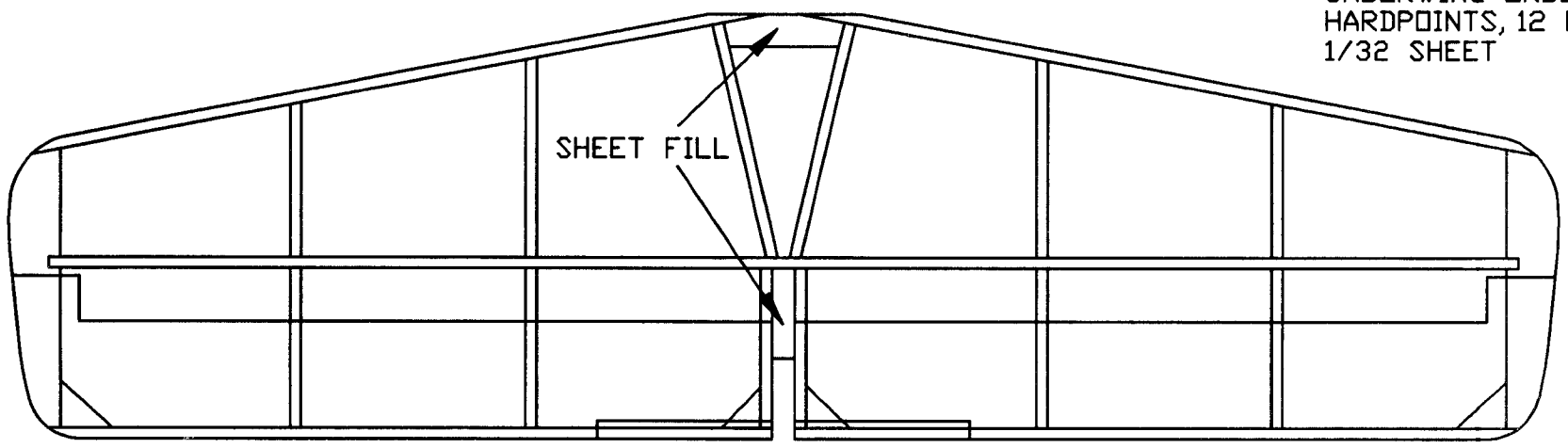
HP UNDERWING ORDINANCE HARDPOINTS, 12 REQ'D. 1/32 SHEET



LANDING GEAR FAIRINGS 2 REQ. CARVE FROM Balsa OR FOAM



GLUE TO FORMER 2

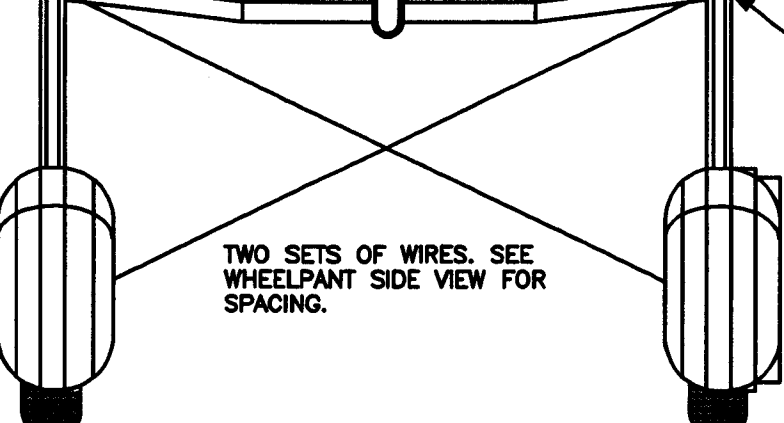
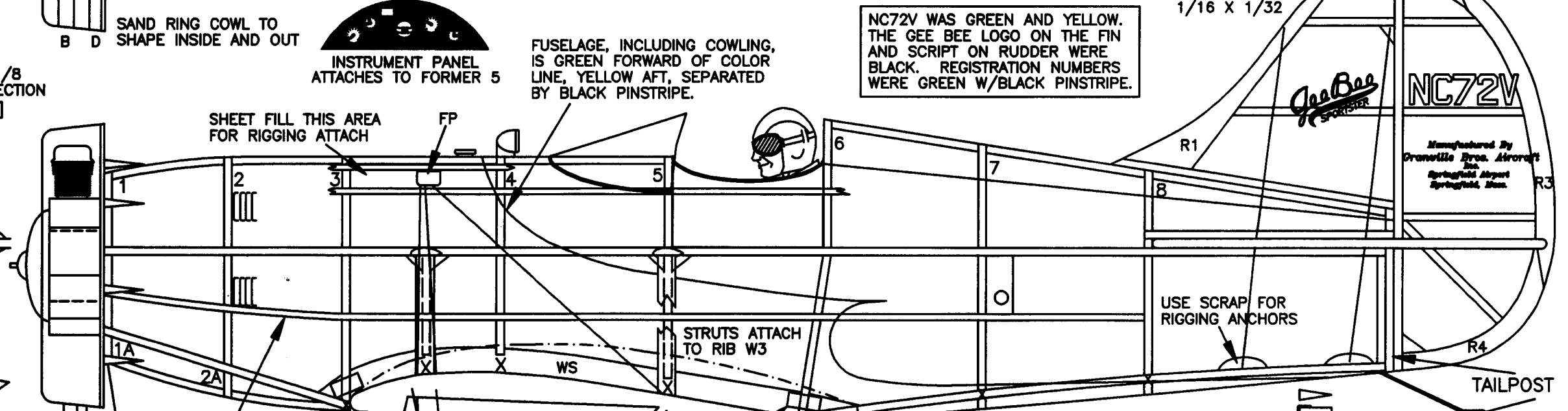
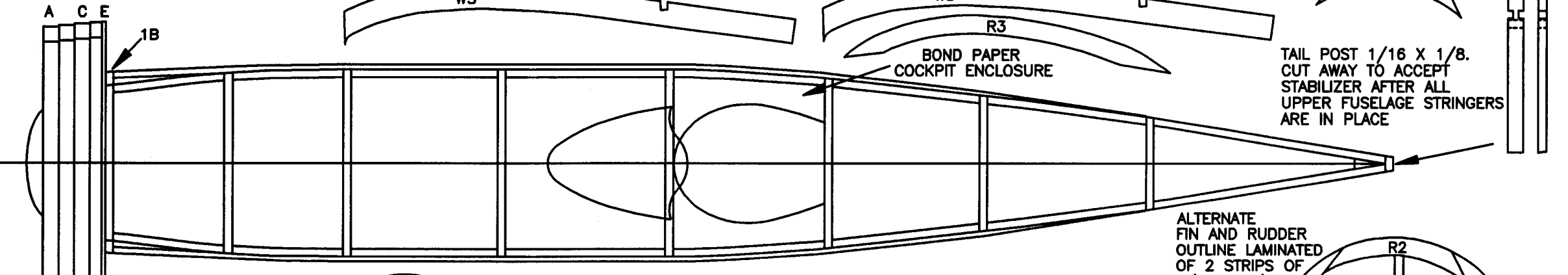
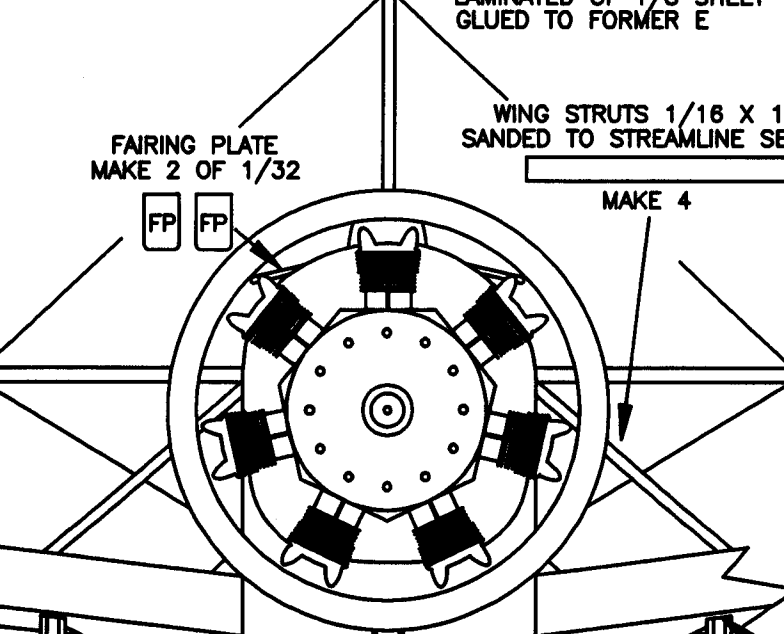
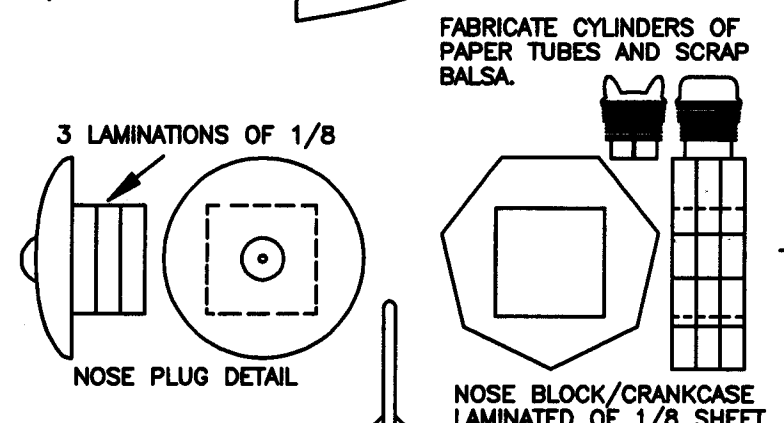
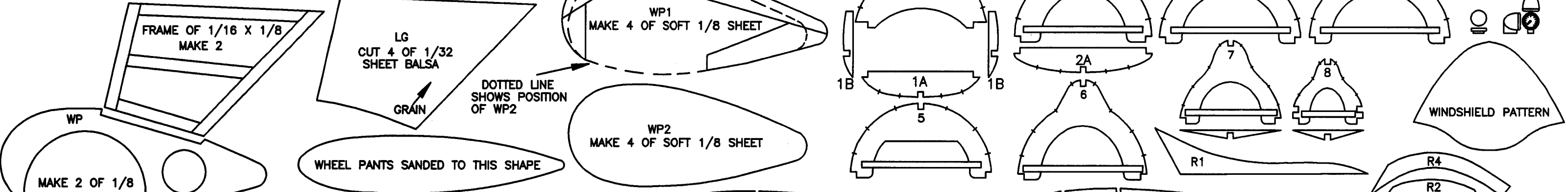


STABILIZER ALL OF 1/16

DOUGLAS A1 SKYRAIDER
 19 INCH WINGSPAN
 SHEET 2 OF 2 Tom Nall 1996

CEMENT ONE LG TO EACH SIDE OF FRAME TO FORM LANDING GEAR LEG. GLUE LEG INTO WP. GLUE ONE WP1 TO EACH SIDE OF WP. GLUE ONE WP2 TO EACH SIDE OF WP1. SAND TO STREAMLINE SHAPE.

GAS CAP AND FUEL GAUGE MADE FROM SCRAP BALSA



MODEL IS ALL BALSAL UNLESS OTHERWISE NOTED.

DIMENSIONS ARE IN INCHES.



REF: HAFKKE - GEE BEE, THE REAL STORY

1931

GEE BEE MODEL E

WARNER POWERED SPORTSTER

18 7/8 INCH WINGSPAN

SHEET 1 OF 2 *TOM NALLEN 1996*

LEADING AND TRAILING EDGES 1/16 X 1/8

DIHEDRAL BREAKS AT RIBS W2

BLACK PINSTRIPE

GREEN

DIHEDRAL 1 1/8 INCH UNDER EACH WING TIP

1/16 X 1/8 LANDING GEAR MOUNTS ALONG LOWER EDGE OF W3

PAPER PUNCH TISSUE DISKS REINFORCE RIGGING POINTS

YELLOW

STRUTS MOUNT TO RIB W3

UPPER STUB SPARS TERMINATE AT RIB W3

BOND PAPER FILLETS

W5

W4

W3

W2

W1

W2

T1

T2

T3

C

A

FORMERS A,B AND C ARE 1/8 SHEET

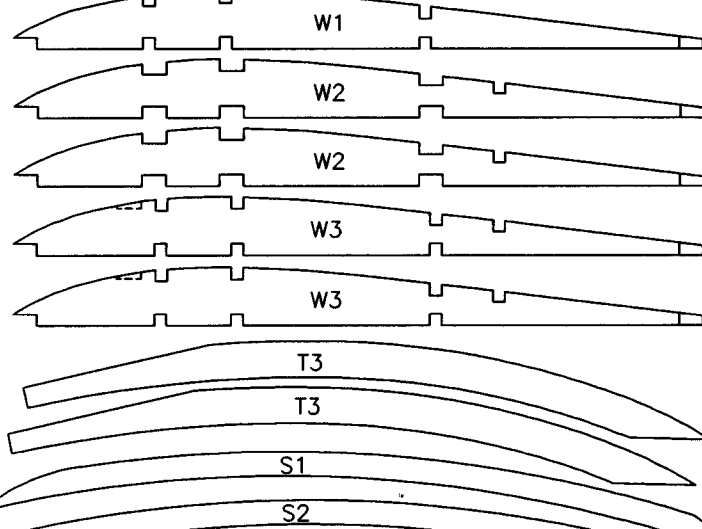
D

3/32 SHEET

B

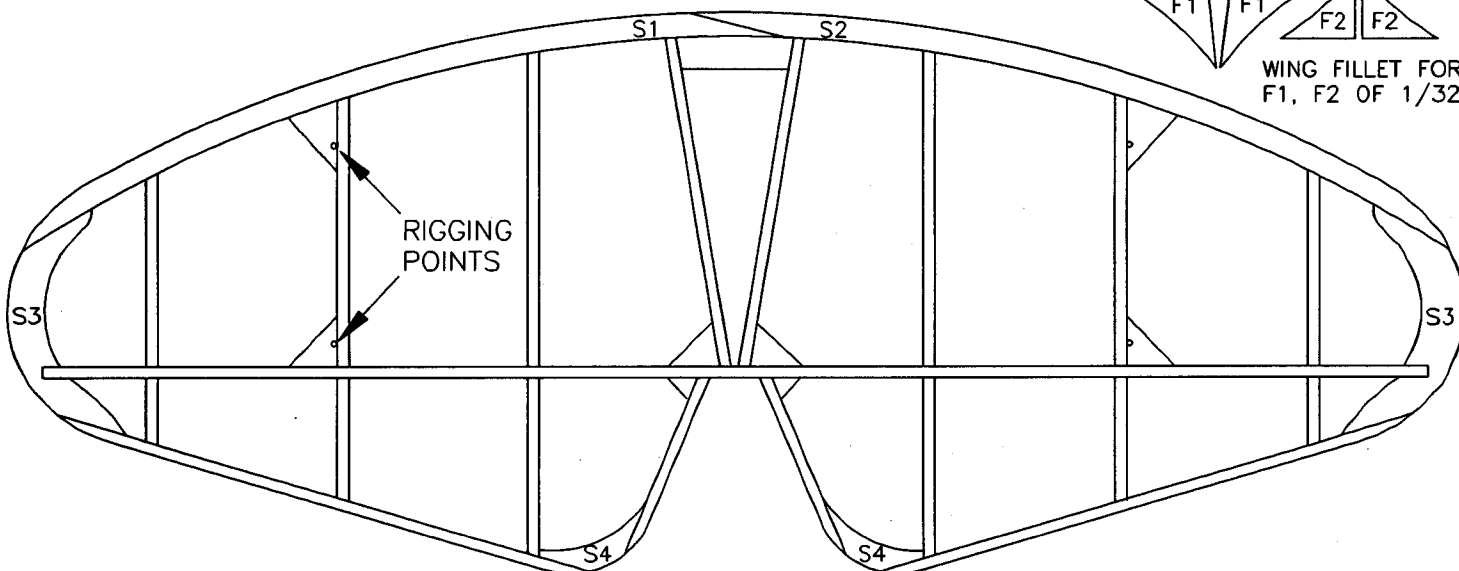
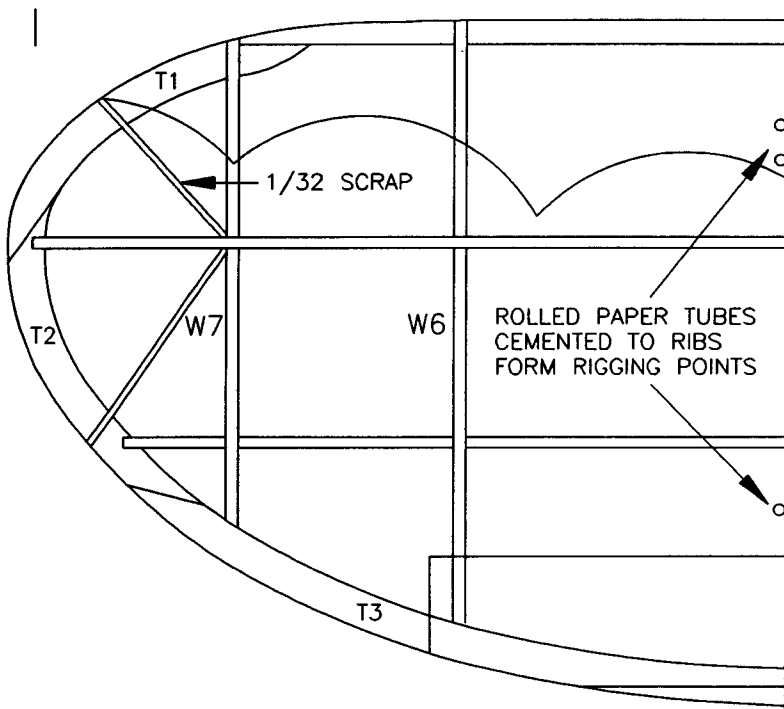
W6

ROLLED PAPER TUBES CEMENTED TO RIBS FORM RIGGING POINTS



WING RIBS, WING TIP AND STAB PARTS OF 1/16 SHEET

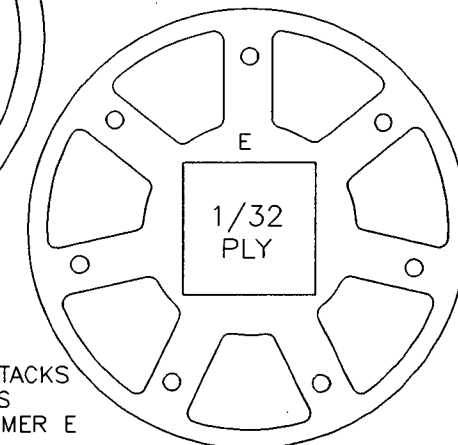
WING FILLET FORMERS F1, F2 OF 1/32 SHEET



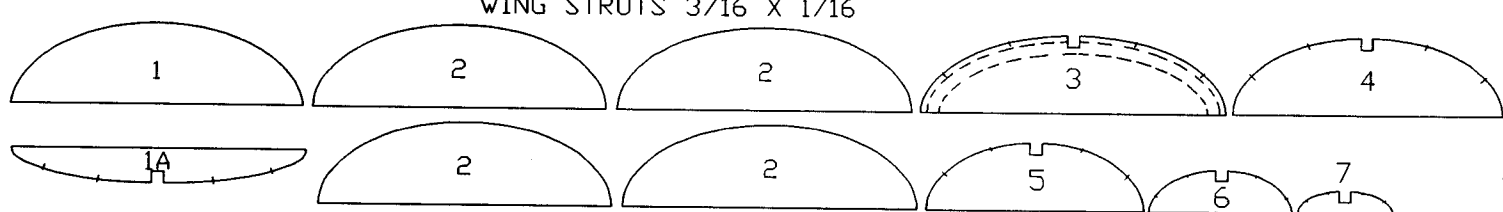
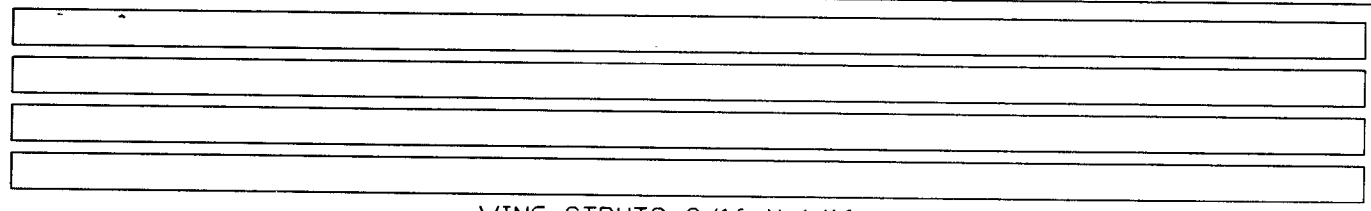
NC72V

REGISTRATION NUMBER ALSO APPEARS UNDER LEFT WING PANEL.

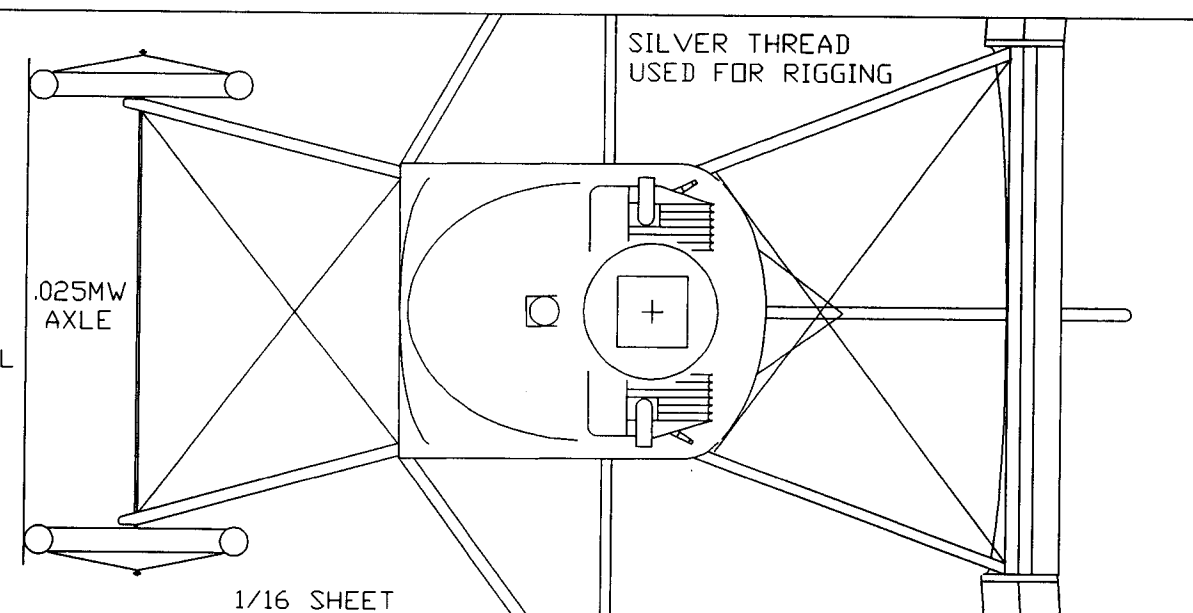
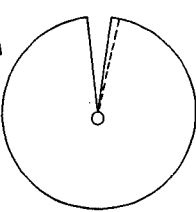
BALSA EXHAUST STACKS GLUED INTO HOLES DRILLED INTO FORMER E



1931
GEE BEE MODEL E
 WARNER POWERED SPORTSTER
 18 7/8 INCH WINGSPAN
 SHEET 2 OF 2



USE PATTERN TO MAKE WINDSHIELD OF THIN ACETATE. FOLD ON DOTTED LINE TO SUIT.

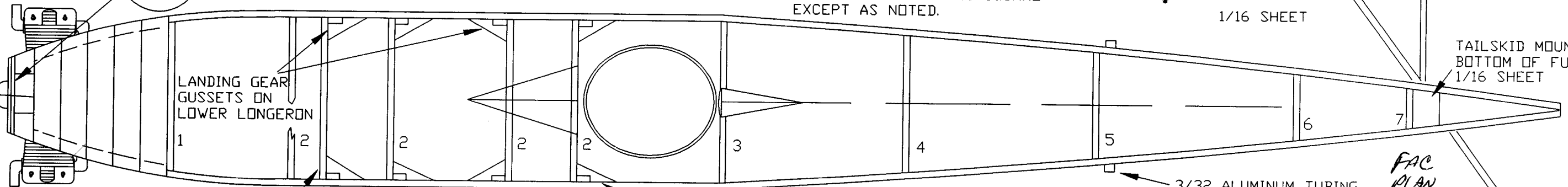


COWL FACED WITH DISK OF 1/32 PLY

3A SHEETING SHELF GLUE TO FORMER 3

ATTACH INSTRUMENT PANEL TO COCKPIT FORMER 2

FUSELAGE LONGERONS, UPRIGHTS AND CROSSPIECES 1/16 SQUARE EXCEPT AS NOTED.



PROTOTYPE FLEW ON 7" PROPELLER WITH 22 INCH LOOP OF 1/8" RUBBER.

REGISTRATION LETTERING APPEARS ON BOTH SIDES OF FUSELAGE AND RUDDER AND TOP AND BOTTOM OF WING. LETTERS MAY BE CUT FROM BLACK TISSUE AND APPLIED WITH A SPRAY ADHESIVE.

FIN AND RUDDER LEADING EDGE LAMINATED OF TWO STRIPS OF 1/32 X 1/16

COWLING OF SOFT 1/4 Balsa RINGS CARVED AND SANDED TO SHAPE.

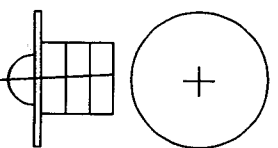
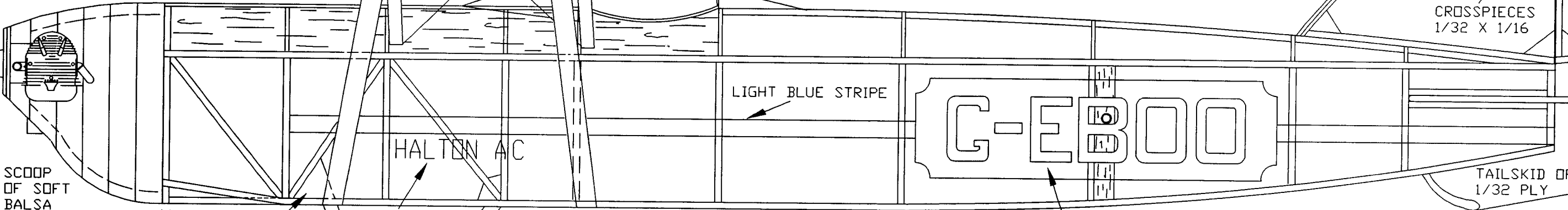
FUSELAGE TOP COVERED WITH 1/32 SHEET

HEADREST FROM SOFT BLOCK

TOP CENTER FUSELAGE STRINGER IS 1/16 SQUARE. ALL OTHERS ARE 1/16 X 1/32

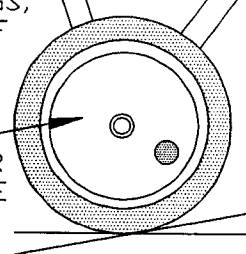
BLACK TISSUE

CROSSPIECES 1/32 X 1/16



LANDING GEAR LEGS, CABANE STRUTS OF 1/8 X 1/16 Balsa.

LIGHT BLUE WITH SILVER RING OUTSIDE

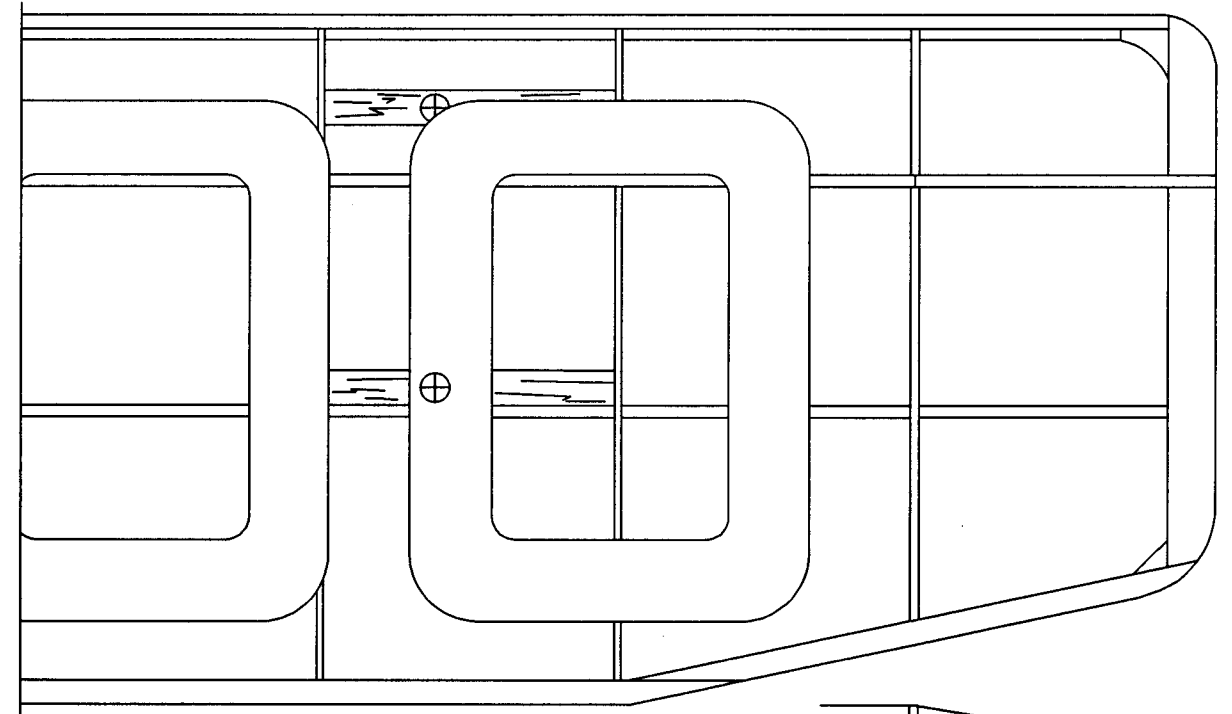
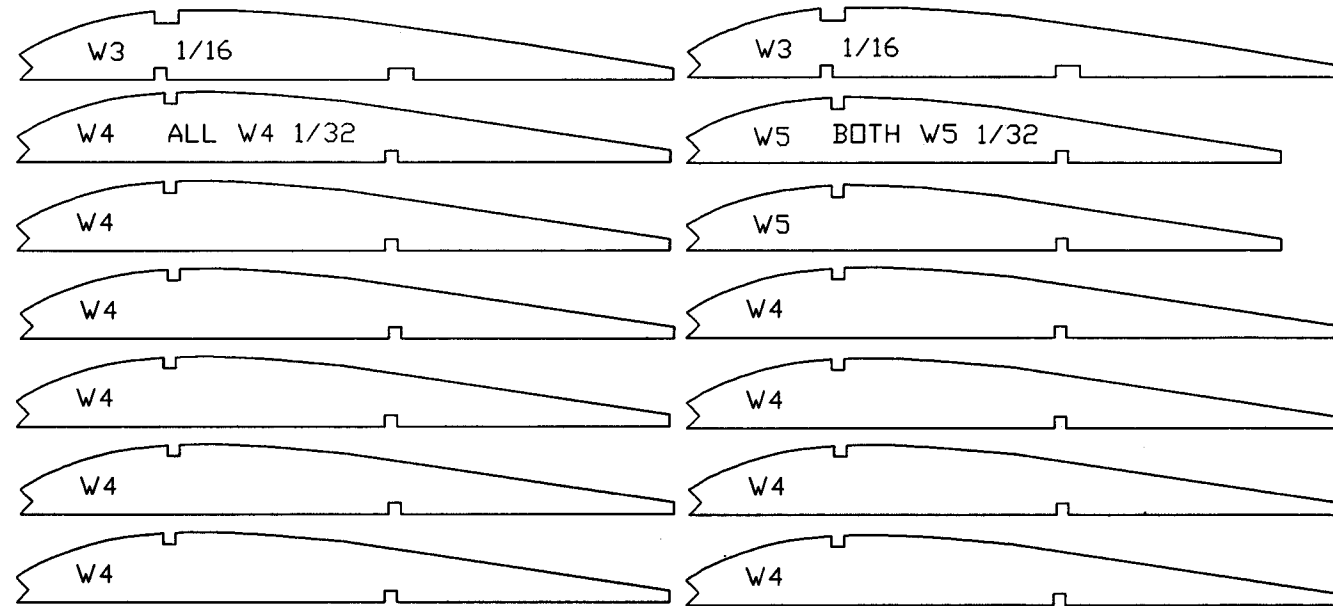
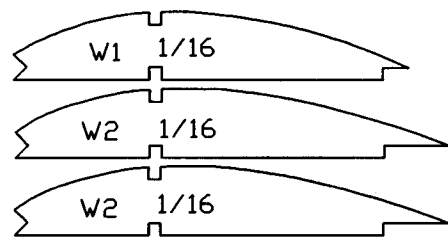
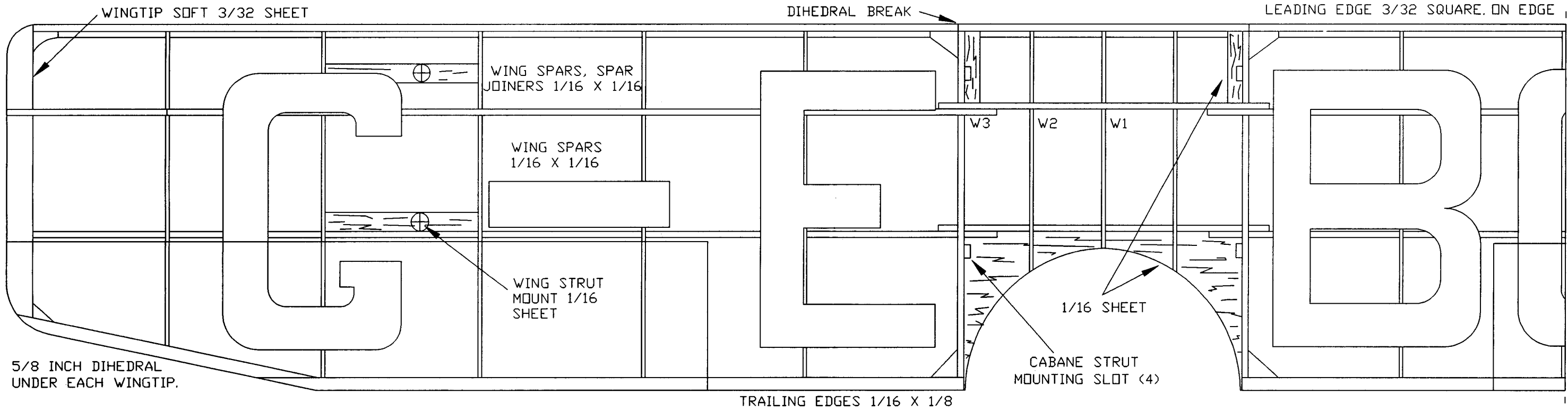


COLOR SCHEME:
SILVER OVERALL EXCEPT FUSELAGE REGISTRATION PANELS WHICH ARE WHITE. ALL STRUTS, FUSELAGE STRIPE AND WHEEL DISCS ARE LIGHT BLUE. SILVER RING AROUND WHEEL DISC. REGISTRATION LETTERING, CONTROL SURFACE OUTLINES AND TIRES ARE BLACK.

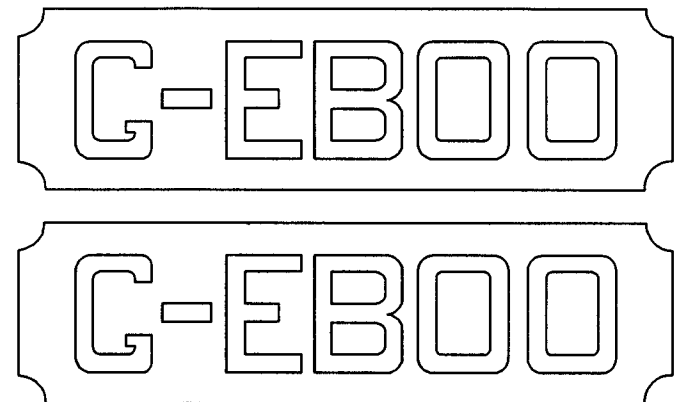
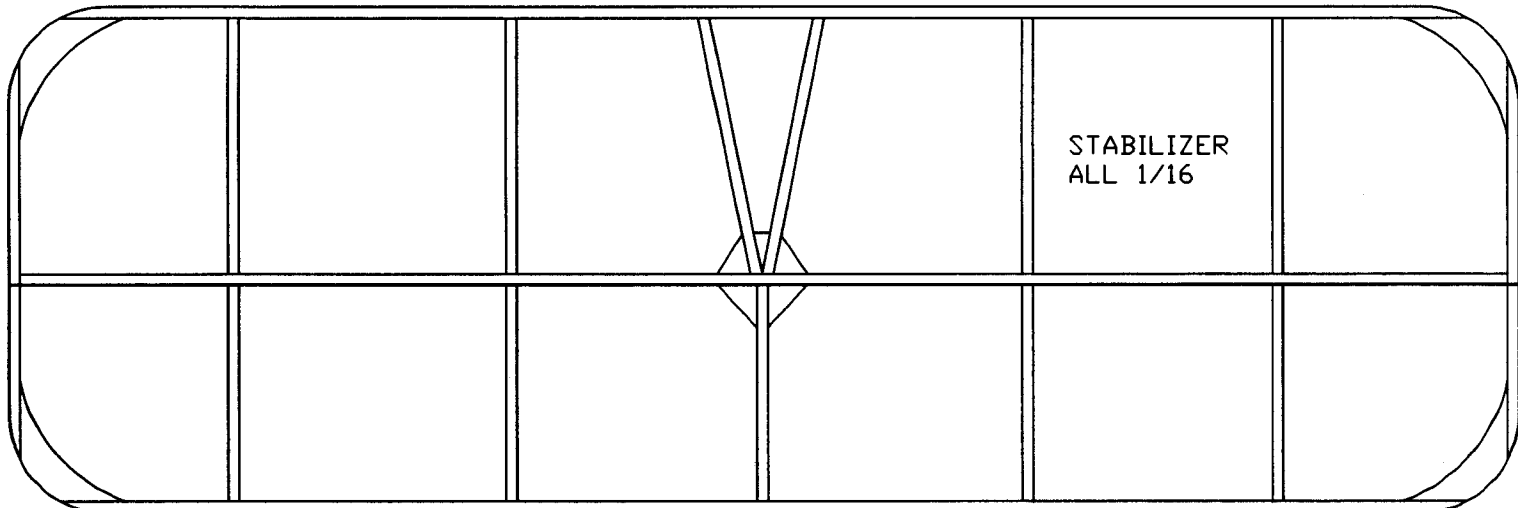
REFERENCE: AEROPANE MONTHLY AUGUST 1974
COLOR DETAIL COURTESY OF MAJ. ED HEYN, USAF RET'D.

DIMENSIONS IN INCHES. MODEL ALL Balsa OTHERWISE NOTED.

1928
HALTON HAC-2
MINUS
BRISTOL "CHERUB" ENGINE
21 1/2 INCH WINGSPAN
SHEET 1 OF 2
Tom Nallen 1996



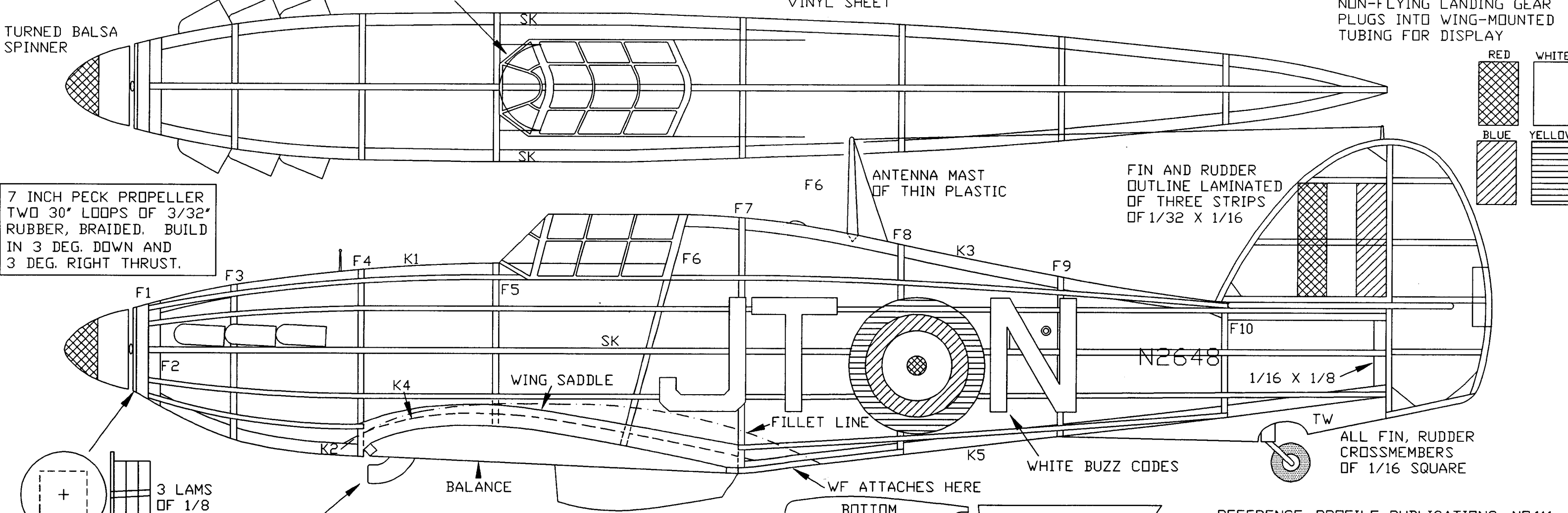
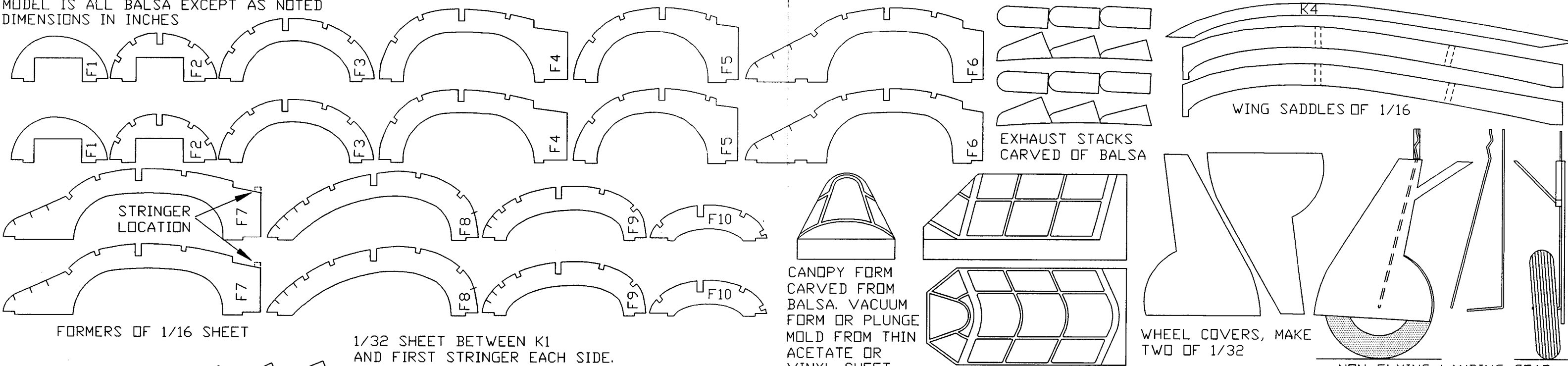
THE HALTON HAC-2 WAS ORIGINALLY CONSTRUCTED AS A BIPLANE. TO INCREASE SPEED, FOR RACING PURPOSES, THE LOWER WING WAS REMOVED. HENCEFORTH THE CRAFT WAS CALLED THE "MINUS". WITH ITS TINY 35 HP BRISTOL CHERUB ENGINE IT WAS ABLE TO ACHIEVE A SPEED OF 80+ MPH.



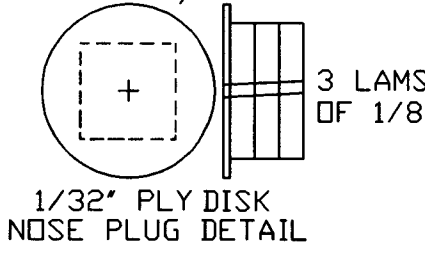
FUSELAGE SIDE REGISTRATION
BLACK LETTERS ON WHITE FIELD

1928
HALTON HAC-2
MINUS
 BRISTOL "CHERUB" ENGINE
 21 1/2 INCH WINGSPAN
 SHEET 2 OF 2
Tom Nallan 1996

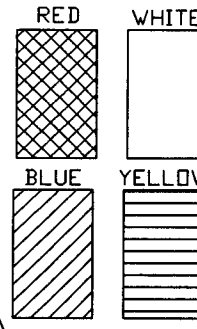
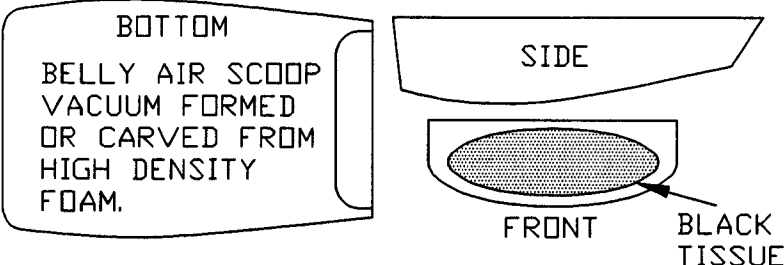
MODEL IS ALL BALSA EXCEPT AS NOTED
DIMENSIONS IN INCHES



7 INCH PECK PROPELLER
TWO 30" LOOPS OF 3/32"
RUBBER, BRAIDED. BUILD
IN 3 DEG. DOWN AND
3 DEG. RIGHT THRUST.

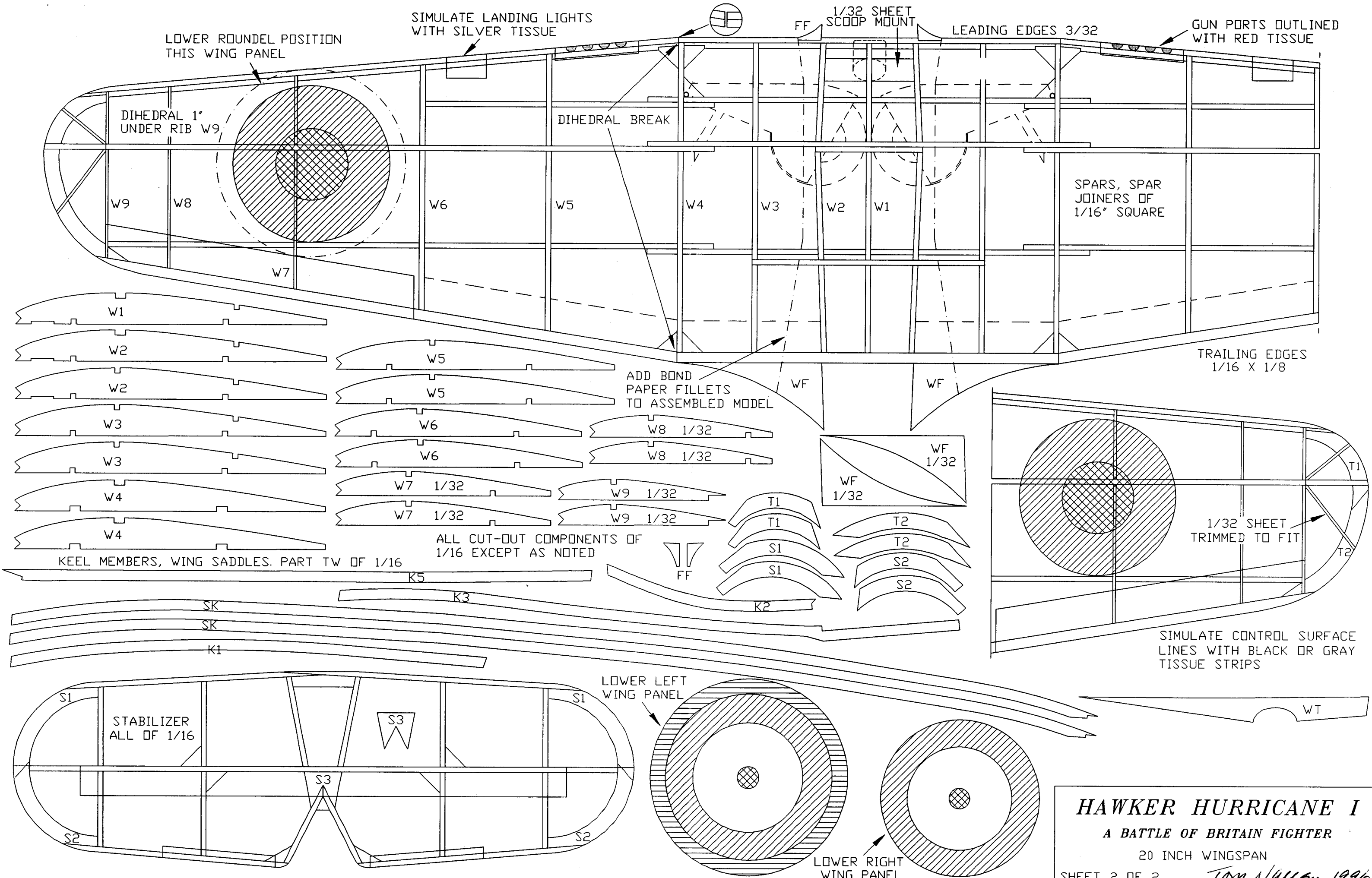


COLOR SCHEME: SAND AND SPINACH FUSELAGE,
FIN, RUDDER, AND UPPER FLIGHT SURFACES.
LOWER SURFACE OF LEFT WING IS BLACK,
INCLUDING FILLETS, FORE AND AFT, TO
CENTERLINE. UNDERSIDE OF RIGHT WING AND
FUSELAGE BOTTOM ARE WHITE.



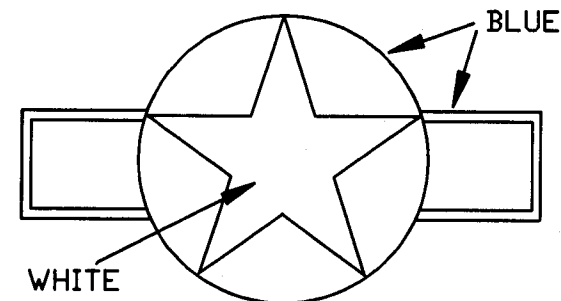
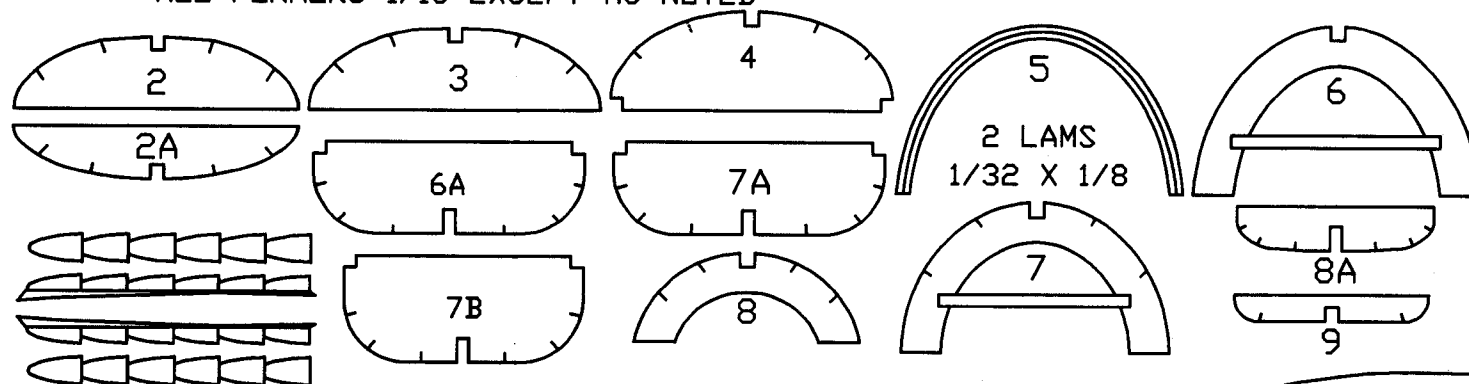
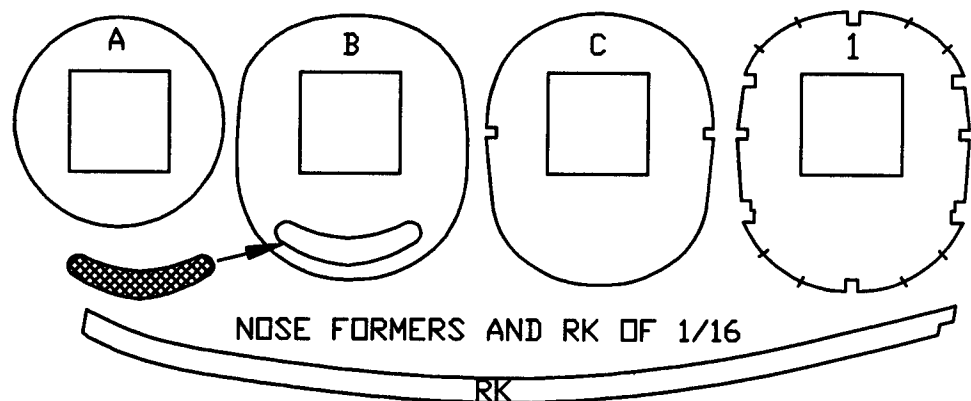
REFERENCE: PROFILE PUBLICATIONS, NO.111

HAWKER HURRICANE I
A BATTLE OF BRITAIN FIGHTER
20 INCH WINGSPAN
SHEET 1 OF 2 *Tom Nallm 1996*



HAWKER HURRICANE I
A BATTLE OF BRITAIN FIGHTER
20 INCH WINGSPAN
SHEET 2 OF 2
Tom Nallan 1996

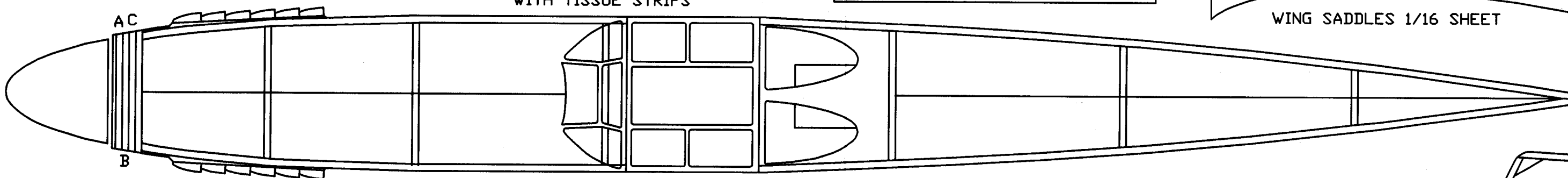
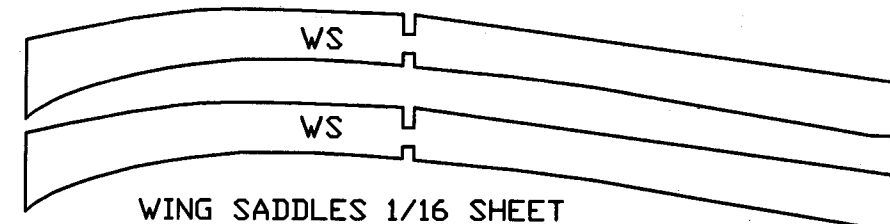
ALL FORMERS 1/16 EXCEPT AS NOTED



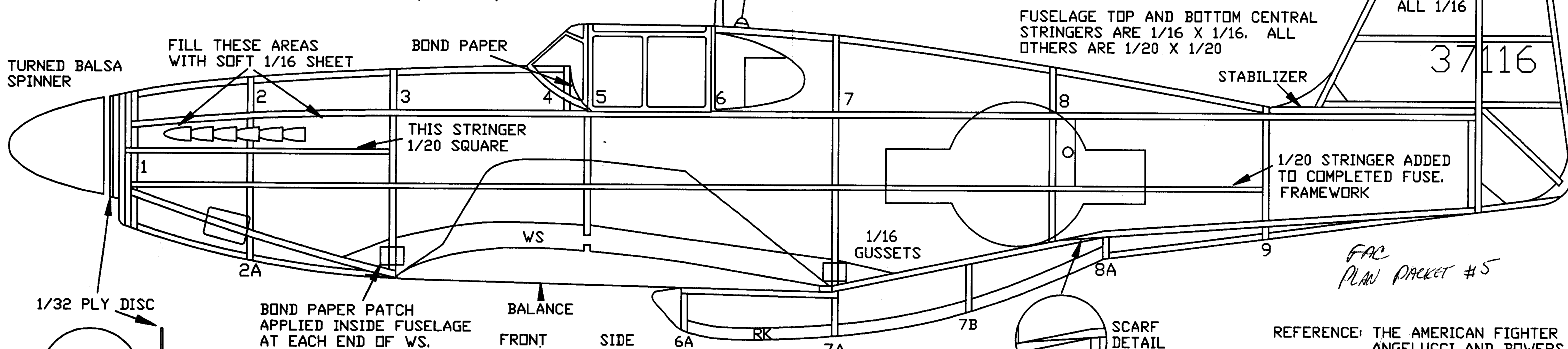
TWO SETS OF EXHAUST STACKS CARVED OF Balsa

TRIM CANOPY WITH TISSUE STRIPS

COLOR SCHEME: SILVER OVERALL ANTI-GLARE GREEN FORWARD OF COCKPIT. EXHAUST STACKS, SERIAL NUMBERS, SCOOP INTAKES-BLACK



BUILD TWO FUSELAGE SIDES OF 1/16 SQUARE OVER PLAN. GLUE SIDES TOGETHER AT REAR. ADD CROSSPIECES, UPPER AND LOWER, AT FORMER LOCATIONS 3 AND 7. ADD FORMER 1, GLUING FORWARD UPPER AND LOWER LONGERONS INTO RESPECTIVE NOTCHES. ADD CROSSPIECES AT EACH UPRIGHT, THEN FORMERS, FINALLY, STRINGERS.



FAC PLAN PACKET #5

REFERENCE: THE AMERICAN FIGHTER ANGELUCCI AND BOWERS

NORTH AMERICAN P-51B MUSTANG
 18.5 INCH WINGSPAN
 SHEET 1 OF 2 Tom Nailsen 1996

8" PECK PROP. 4 DEG. DOWN, 3 DEG. RIGHT THRUST. TWO 30" LOOPS OF TAN II, ONE OF 3/32", ONE OF 1/8", BRAIDED.

DIMENSIONS IN INCHES. ALL BALSA UNLESS SPECIFIED.

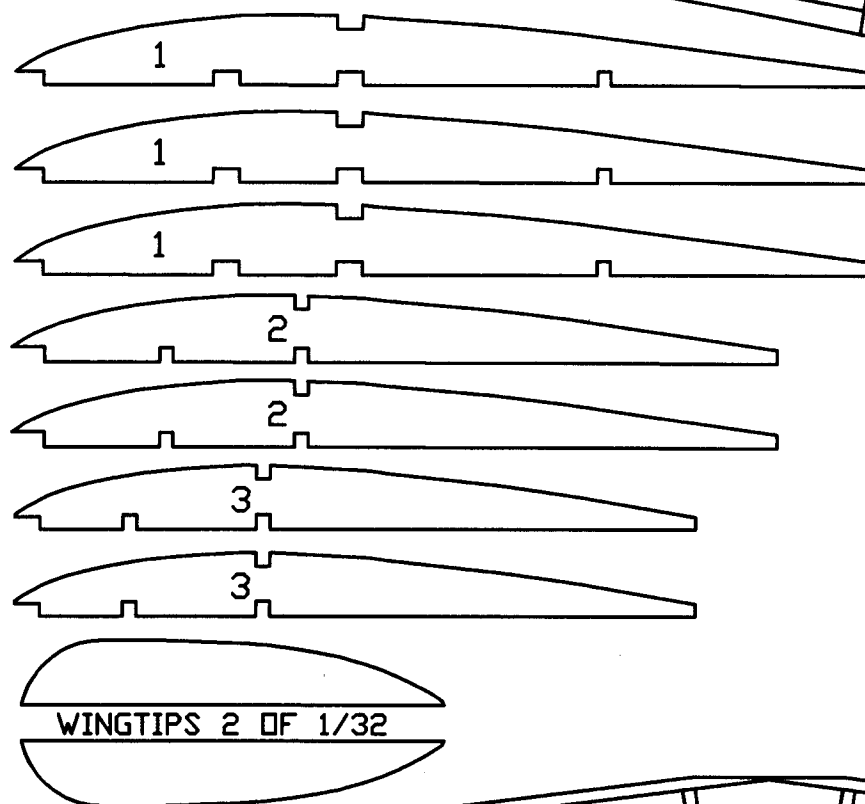
LEADING AND TRAILING EDGES 1/16 X 1/8

DIHEDRAL BREAK

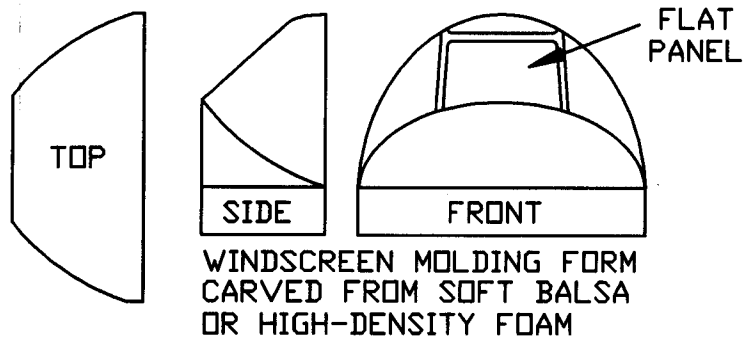
SPARS, SPAR JOINERS 1/16 X 1/16

1/32 WEB BETWEEN SPARS OUT TO RIB 3

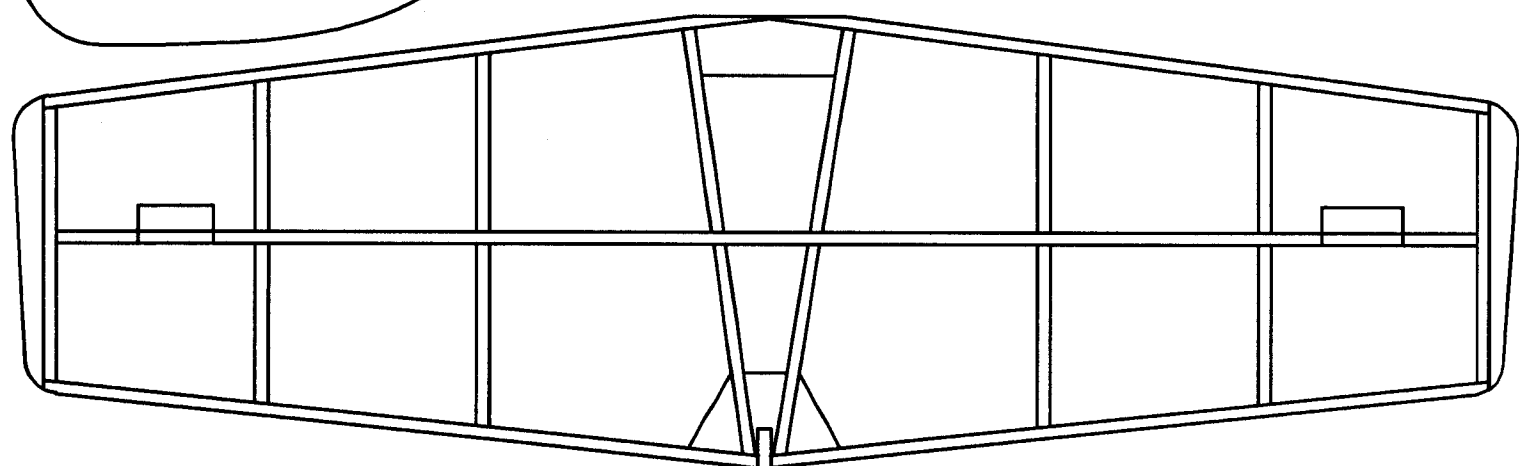
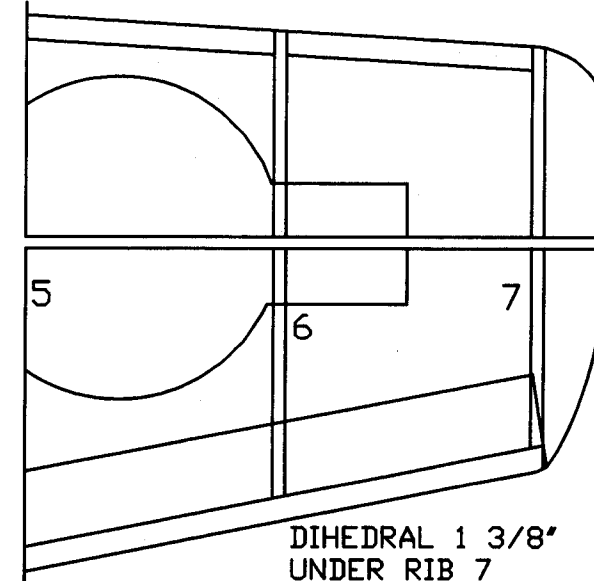
INSIGNIA ON UNDERSIDE OF PANEL



WING RIBS OF 1/16

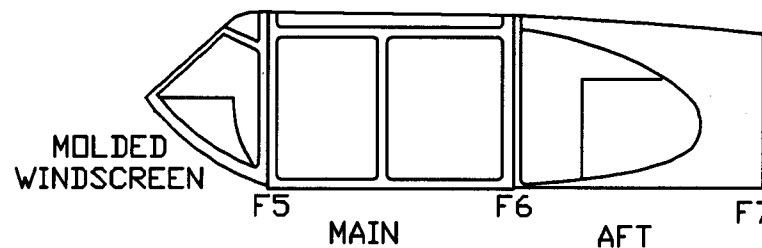


WINGTIP 1/32 SHEET ANGLED UPWARD TO MEET SPAR



STABILIZER ALL OF 1/16

MAIN AND AFT SECTIONS OF CANOPY ARE PIECES OF LIGHT ACETATE SHEET APPLIED SEPARATELY. BUTT JOINTS WITH ADJACENT SECTIONS OCCUR AT F5 AND F6. TISSUE USED FOR TRIM.



INSTRUMENT PANEL GLUE TO FORMER 4

NORTH AMERICAN P-51B MUSTANG

18.5 INCH WINGSPAN

SHEET 2 OF 2 *Tom Nallsen 1996*